

## 8. Restrooms - Sections 1115B and 1117B

Not all restrooms or features of a building are open on Election Day. However, if there is a restroom available to voters on Election Day, the restroom shall be accessible.

There are two types of restrooms: single accommodation and multiple accommodation. Single accommodation restrooms are designed for use by one person at a time behind a locked door. Multiple accommodation restrooms allow more than one person at a time to enter and exit the restroom.

When restrooms are available to voters on Election Day, they shall be on an accessible path of travel. (Cal. Code Regs., tit. 24, § 1114B.1.)

There are two sets of restroom signs required at the entrance of every restroom. The first set of signs, located on the latch side, or strike side edge of the door, is centered above the finished floor at 60 inches. These signs, in contrasting colors, have an ISA, raised letters and Braille, and an optional pictogram to indicate whether the restroom is a Men's, Women's or Unisex, accessible restroom. (Cal. Code Regs., tit. 24, §§ 1117B.5.2, 1117B.5.5, 1117B.5.6, 1117B.5.7 and 1117B.5.8.) See Figure 30.



Figure 30

The second set of signs are symbols placed on the door for Men's, Women's, and Unisex restrooms. The men's restroom door sign is identified by an equilateral triangle with edges 12 inches long and the apex pointing upward. The women's restroom door sign is a circle 12 inches in diameter. The unisex sign is a circle 12 inches in diameter with a triangle placed over the circle within the 12-inch diameter.

These geometric symbols/signs shall be centered on the door at a height of 60 inches above the floor, and their color shall contrast distinctly from the color of the door. (Cal. Code Regs., tit. 24, § 1115B.6.) See Figure 31.



Figure 31

Restroom entrances shall comply with the requirements in Section 3 Doors, Hallways and Entrances. (Cal. Code Regs., tit. 24, § 1133B.)

Inside the restroom, accessible fixtures such as paper towel dispensers, soap dispensers, or electronic hand dryers shall be on an accessible path of travel. (Cal. Code Regs., tit. 24, § 1115B.1.) The minimum width of an accessible path of travel shall be 36 inches, or, at a point may reduce in width to 32 inches. (Cal. Code Regs., tit. 24, § 1118B.1.)

An unobstructed turning space 27 inches high and at least 60 inches in diameter is required inside the restroom for voters who use wheelchairs for mobility. No door may swing into this space more than 12 inches except the door to the accessible toilet compartment. (Cal. Code Regs., tit. 24, § 1115B.3.1.) See Figure 32.

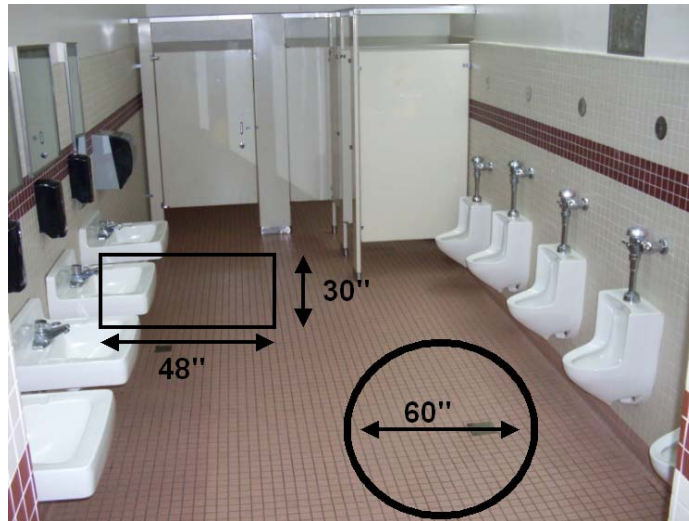


Figure 32

Clear spaces 30 inches by 48 inches are required in front of lavatories, dispensers, mirrors and other fixtures with controls. (Cal. Code Regs., tit. 24, § 1117B.6.2.) Doors shall not swing into the clear spaces required in front of these items. (Cal. Code Regs., tit. 24, § 1115B.3.1.2.) The accessible path of travel, the 60 inch diameter turning space, and the clear floor spaces in front of lavatories, dispensers, mirrors and other fixtures with controls may overlap. (Cal. Code Regs., tit. 24, § 1115B.1.)

Accessible lavatories have several clear space requirements illustrated by Figure 33 and described below.

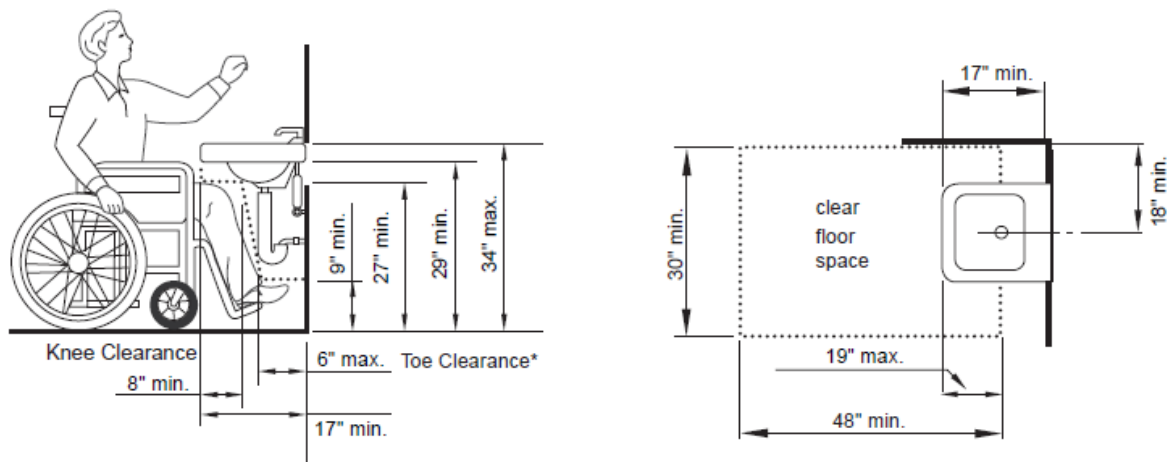


Figure 33

A clear floor space of 30 inches by 48 inches is required at the lavatory. This clear floor space shall adjoin or overlap an accessible path of travel in the restroom. The 30 inches by 48 inches clear space may extend up to 19 inches into the knee space underneath the lavatory. (Cal. Code Regs., tit. 24, § 1115B.4.3.3.) This clear space allows a person using a wheelchair for mobility to move close enough to comfortably use the faucet controls, dispensers, or mirror.

When lavatories are located next to a sidewall or partition, a minimum 18 inches of clear space on the counter (measured from the wall to the centerline of the faucet) is required for arm movement. (Cal. Code Regs., tit. 24, § Cal. Code Regs. § 1115B.4.3.2.)

The front rim of accessible lavatories shall be a minimum of 17 inches in horizontal depth away from the wall and mounted with the rim or counter edge a maximum of 34 inches from the floor. (Cal. Code Regs., tit. 24, § 1115B.4.3.2.)

The vertical clearance under the counter at the front edge of the lavatory shall be at least 29 inches above the floor. Moving 8 inches underneath the lavatory, the 29-inch measurement is reduced to 27 inches above the floor. The last measurement is of clear space on the floor at a point 6 inches forward from the back wall. This space for toe clearance shall be at least 9 inches high. The toe clear space shall be free of equipment, such as hot water heaters, or other obstructions, such as garbage cans or supplies. These measurements are illustrated in Figure 33. (Cal. Code Regs., tit. 24, § 1115B.4.3.)

Faucet controls and other operating mechanisms shall be operable with one hand and not require tight grasping, pinching or twisting of the wrist. The maximum effort allowed for activating faucet controls is 5 pounds of force. Push-type, electronically controlled, and lever-operated faucets are preferred. When push-type, electronic, or automatic faucet controls are activated, the water shall remain on for at least 10 seconds. (Cal. Code Regs., tit. 24, § 1115B.4.3.)

To avoid injury, water pipes and drainpipes under accessible lavatories shall be insulated or covered. For the same reason, sharp or abrasive surfaces under lavatories shall not be allowed. (Cal. Code Regs., tit. 24, § 1115B.4.3.4.)

At least one of each type of restroom dispenser or other equipment provided for public use shall be located on an accessible path of travel. Where controls are provided, at least one of each type of towel holder, sanitary napkin dispenser, waste receptacle, or other dispenser shall be installed with operable controls a maximum of 40 inches above the floor. For all operable controls, the movement of the control from beginning to end shall be at or below the 40-inch maximum height. (Cal. Code Regs., tit. 24, § 1115B.8.3.) Controls and operating mechanisms shall be operable with one hand and shall not require tight grasping, pinching or twisting of the wrist. (Cal. Code Regs., tit. 24 § 1117B.6.4.) Mirrors shall be mounted with the bottom edge of the reflecting surface no higher than 40 inches from the floor. (Cal. Code Regs., tit. 24, § 1115B.8.) The toilet paper dispenser is more specifically placed within 12 inches of the front edge of the toilet and at least 19 inches above the floor. Dispensers that control delivery or that do not permit continuous paper flow shall not be used. Toilet paper dispensers shall be installed under the side grab bar. (Cal. Code Regs., tit. 24, § 1115B.8.4.)

A multiple accommodation restroom provides one or more toilet stalls. At least one of these toilet stalls shall be accessible. (Cal. Code Regs., tit. 24, § 1115B.3.1.3.) The minimum width for an accessible toilet stall is 60 inches. (Cal. Code Regs., tit. 24, § 1115B.3.1.4.1.)

When the toilet stall has an end-opening door that faces the toilet, a minimum 60 inches wide by 48 inches deep clear floor space shall be provided in front of the toilet. (Cal. Code Regs., tit. 24, § 1115B.3.1.4.3.) If the stall has a side-opening door, a minimum 60 inches wide by 60 inches deep clear floor space shall be provided in front of the toilet. (Cal. Code Regs., tit. 24, § 1115B.3.1.4.2.)

The toilet stall shall also have a self-closing door. The door shall have an opening width of 32 inches when located at the end of the stall, and 34 inches when located at the side. (Cal. Code Regs., tit.

24, § 1115B.3.1.4.4.) The latch hardware on the stall door shall be a flip-over style, sliding or other similar type that does not require the user to grasp, pinch or twist their wrist. An additional loop or U-shaped handle on the inside and outside of the stall door shall be placed just below the latch. (Cal. Code Regs., tit. 24, § 1115B.3.1.4.5.) See Figure 34.



Figure 34

Except for door-opening widths and door swings, a clear path not less than 44 inches shall be provided to accessible toilet stalls. The space immediately in front of the stall shall not be less than 48 inches deep measured at a right angle to the closed stall door. See Figure 35.



Figure 35

Inside the stall, additional clear space is required in front of and around the toilet. A minimum 60 inches wide by 48 inches deep clear floor space shall be provided in front of the toilet. The centerline of the toilet shall be 18 inches from the nearest sidewall or partition, and on the opposite side of the toilet, the edge of the toilet shall be a minimum of 32 inches from a wall or partition. See Figure 36. (Cal. Code Regs., tit. 24, § 1115B.4.1.)

The height of an accessible toilet shall be between 17 inches and 19 inches measured from the floor to the top of the toilet seat. See Figure 36. (Cal. Code Regs., tit. 24, § 1115B.4.1.)

Flush controls shall be accessible. The flush control shall be mounted no more than 44 inches above the floor and located on the open floor side of the toilet. Flush controls shall require no more than 5 pounds of force to operate. Electronic automatic flushing controls are recommended. (Cal. Code Regs., tit. 24, § 1115B.4.1.)

Grab bars in the accessible toilet stall shall be provided on the sidewall closest to the toilet and on the rear wall behind the toilet. (Cal. Code Regs., tit. 24, § 1115B.4.1.) They shall be 1 ¼ inch to 1 ½ inch in diameter and mounted with a space of 1 ½ inch between the grab bar and the wall. (Cal. Code Regs., tit. 24, § 1115B.7.1.)

The side grab bars shall be a minimum of 42 inches long, extend 54 inches minimum from the rear wall, and continue past the front edge of the toilet at least 24 inches. The side grab bar shall be securely attached and centered 33 inches above and parallel to the floor. (Cal. Code Regs., tit. 24, § 1115B.4.1.)

The rear grab bar shall be a minimum of 36 inches long, extend from the centerline of the toilet 12 inches minimum toward the narrow side, and 24 inches minimum toward the wide side. The rear grab bar shall be securely attached and centered 33 inches above and parallel to the floor. If a tank-type toilet prevents the rear grab bar from being placed at 33 inches above the floor, the grab bar may be as high as 36 inches. (Cal. Code Regs., tit. 24, § 1115B.4.1.) See Figure 36.



Figure 36

Single accommodation restrooms (the same configuration as Unisex restrooms) provide at least one toilet and one sink. The room may or may not have a partition between the toilet and sink.

Inside the single accommodation restroom, there shall be sufficient space for a wheelchair measuring 30 inches wide by 48 inches long to enter the room and permit the door to close. There shall be a clear floor space of at least 60 inches in diameter, or a T-shaped turning space. A door cannot encroach into this space by more than 12 inches and shall not swing into the clear floor space required for any fixture. Grab bars shall be provided on the sidewall closest to the toilet and on the rear wall behind the toilet. (Cal. Code Regs., tit. 24, §§ 1115B.4.1, 1115B.3.2.)

The centerline of the toilet shall be 18 inches from the nearest sidewall. The other side of the toilet shall have clear space a minimum of 28 inches wide if the toilet is adjacent to a fixture or a minimum of 32 inches wide if the toilet is adjacent to a wall. In front of the toilet, there shall be a rectangle clear space a minimum of 60 inches wide by 48 inches deep. (Cal. Code Regs., tit. 24, § 1115B.4.1.)