

3. Doorways, Hallways and Entrances - Section 1133B

Doorways, hallways, and entrances into the voting area shall be connected by an accessible path of travel from public transportation stops, from accessible parking and passenger loading zones, and from public streets or sidewalks if these paths of travel are provided. (Cal. Code Regs., tit. 24, § 1133B.1.1.1.1.)

To ensure voters with disabilities and elderly voters are able to open the door and enter the voting area, the maximum effort to pull or push open a door shall not exceed five pounds of force. (Cal. Code Regs., tit. 24, § 1133B.2.5.) Doors on the accessible path of travel shall have a clear width of at least 32 inches measured with the door open at a 90-degree angle. Measurements shall be taken between the face of the door and the opposite stop. (Cal. Code Regs., tit. 24, § 1133B.1.1.1.1.)

The “strike-side” or “strike-edge” of the door is located at the edge of the door opposite the hinges. The strike-side requires a clear space on the pull side of the door that extends 18 inches beyond the edge of the door for interior doors, and 24 inches for exterior doors. (Cal. Code Regs., tit. 24, § 1133B.2.4.3.) Some doors have an automatic closing device. If a door has an automatic closer and the door hardware latches shut, the push side of the door requires a clear space that extends 12 inches beyond the edge of the door. (Cal. Code Regs., tit. 24, § 1133B.2.4.2.) See Figure 7.

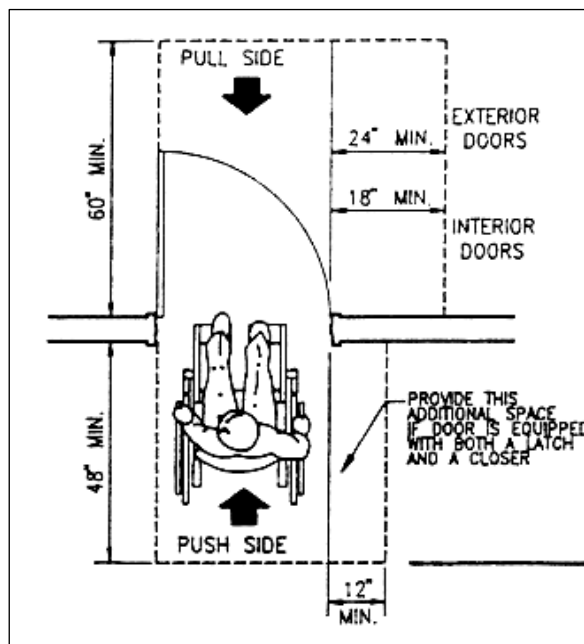


Figure 7 (Cal. Code Regs., tit. 24, § 11B-26a)

Entrances require level landings on each side of the door to allow a voter to open and maneuver around a door. All doors shall have a 60-inch landing perpendicular to the door on the pull-side of the door. On the push side, there shall be a 48-inch landing perpendicular to the door. (Cal. Code Regs. tit. 24, § 1133B.2.4.2)

The bottom 10 inches of all doors on the push side, except automatic and sliding doors, shall have a smooth, uninterrupted surface to allow the door to be opened by a wheelchair footrest without creating a trap or hazardous condition. (Cal. Code Regs. tit. 24, § 1133B.2.6.)

The threshold at the bottom of a doorway may not exceed ½ inch in height. Any vertical surface at the threshold ¼-inch to ½-inch high shall be beveled. (Cal. Code Regs., tit. 24, § 1133B.2.4.1.)

Hand-activated door opening hardware, such as handles, pulls, latches, locks, and other operating devices shall be easy to operate with one hand without tight grasping, pinching or twisting of the wrist. The center of the door hardware shall be placed between 30 inches and 44 inches above the finished floor. Latching and locking doors that are hand-activated and are located on a path of travel shall be operable with a single effort by lever-type hardware, panic bars, push-pull activating bars or other similar hardware. (Cal. Code Regs. tit. 24, § 1133B.2.5.2.) See Figure 8.

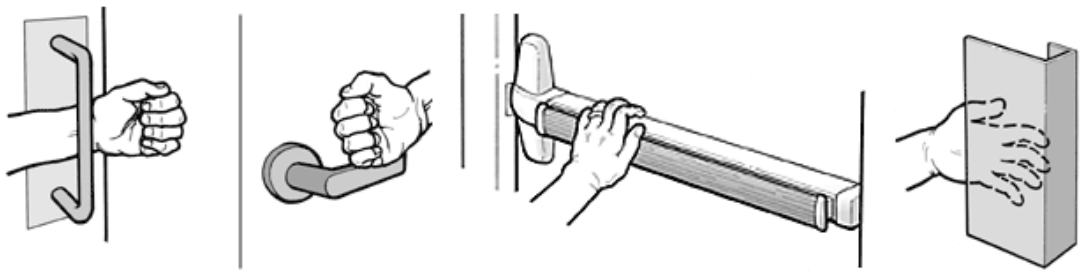


Figure 8

Hallway and corridor width requirements depend on the number of people using the area. When more than 10 people use hallways or corridors in buildings such as businesses, churches, or schools, the required width of the hallway/corridor is 44 inches wide. Corridors and hallways serving an occupant load of less than 10 shall not be less than 36 inches wide. (Cal. Code Regs. tit.24, § 1133B.3.1.)

When hallways exceed 200 feet in length, there shall be passing spaces 60 inches by 60 inches, at intervals no more than 200 feet apart. A “T” intersection of two corridors or walks is an acceptable passing place. (Cal. Code Regs. tit.24, § 1133B.3.2.) See Figure 9.

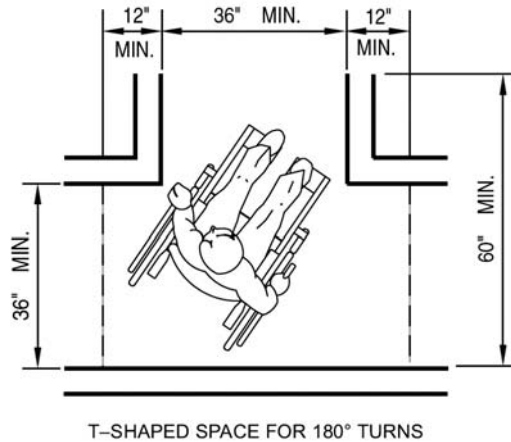


Figure 9

Other requirements for the interior path of travel may include the slope, cross-slope, overhead clear space, protruding objects, changes in level, and stable, firm, and slip-resistant surfaces, or other path of travel features as explained in Section 2 Path of Travel.